

THE PLATTING OF THE LAND HEREON SHOWN IS WITH THE FREE CONSENT AND IN ACCORDANCE WITH THE DESIRES OF THE UNDERSIGNED OWNERS, PROPRIETORS, AND TRUSTEES.

DARE-PIKE, LTD.

RICHARD W. HUGGINS, GENERAL PARTNER

I, Georganna Schira, A NOTARY PUBLIC IN AND FOR THE CITY OF PRINCETON, STATE OF VA. DO HEREBY CERTIFY THAT THE ABOVE NAMED PERSONS WHOSE NAMES ARE SIGNED TO THE FOREGOING WRITING HAVE ACKNOWLEDGED THE SAME BEFORE ME IN MY CITY/COUNTY AND STATE AFORESAID.

GIVEN UNDER MY HAND THIS 19th DAY OF May, 1989

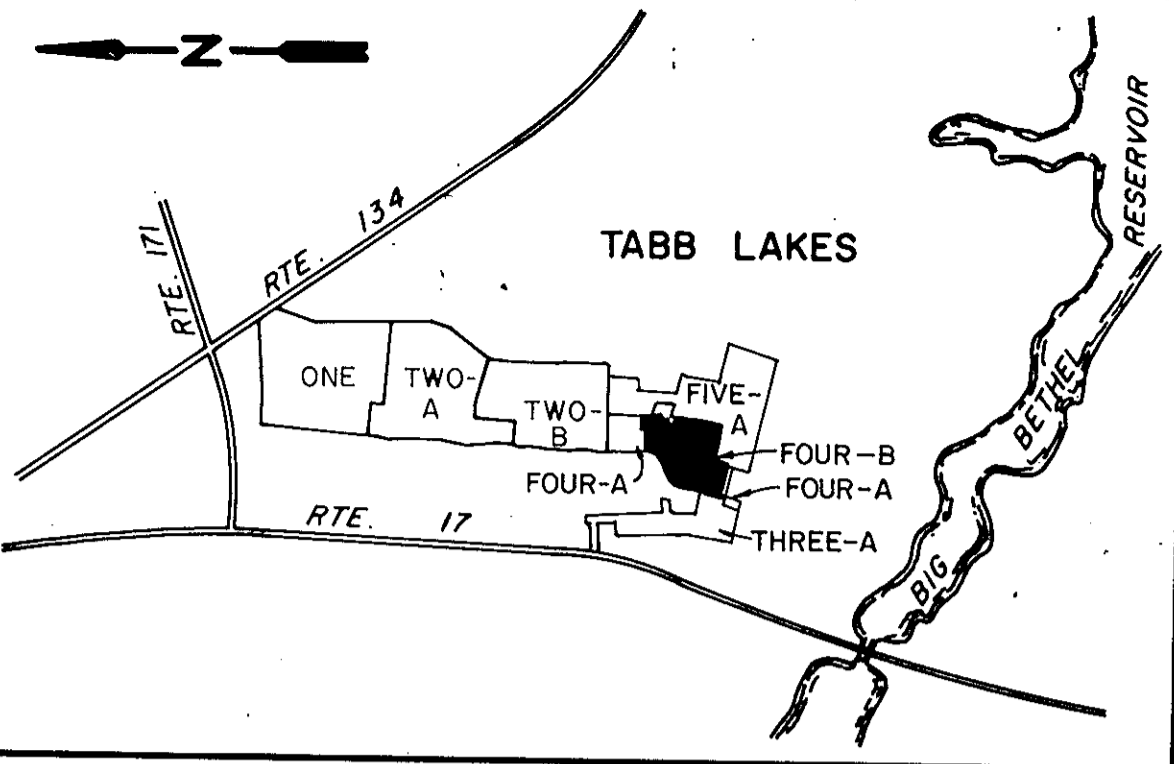
Georganna Schira NOTARY PUBLIC

MY COMMISSION EXPIRES 12/18/92

TABB LAKES SECTION FOUR-B COUNTY OF YORK, VIRGINIA

THE DeYOUNG-JOHNSON GROUP, INC.
P.O. BOX 197
WILLIAMSBURG, VA. 23187

SCALE: 1" = 100' NOVEMBER 28, 1988
SHEET 1 OF 1



VICINITY MAP 1" = 2000'

THE PLATTING OF THE LAND HEREON SHOWN IS WITH THE FREE CONSENT AND IN ACCORDANCE WITH THE DESIRES OF THE UNDERSIGNED OWNERS, PROPRIETORS, AND TRUSTEES.

TABB LAKES, LTD.
Cowles M. Spencer
COWLES M. SPENCER - PRESIDENT

SOVRAN BANK, N.A., TRUSTEE
William G. Ouzts
WILLIAM G. OUZTS - VICE-PRESIDENT

A NOTARY PUBLIC IN AND FOR THE STATE OF VIRGINIA DO HEREBY CERTIFY THAT THE ABOVE NAMED PERSONS WHOSE NAMES ARE SIGNED TO THE FOREGOING WRITING HAVE ACKNOWLEDGED THE SAME BEFORE ME IN MY CITY/COUNTY AND STATE AFORESAID.

GIVEN UNDER MY HAND THIS 16th DAY OF April, 1989

NOTARY PUBLIC

MY COMMISSION EXPIRES 5-24-92

TO THE BEST OF MY KNOWLEDGE AND BELIEF, ALL THE REQUIREMENTS AS SET FORTH IN THE ORDINANCE FOR APPROVING PLATS OF SUBDIVISIONS IN THE COUNTY OF YORK, VIRGINIA HAVE BEEN COMPLIED WITH, INCLUDING A CLOSURE OF NOT LESS THAN 1/10,000'

THIS IS TO CERTIFY THAT THE LAND EMBRACED IN THIS SUBDIVISION IS IN THE NAME OF:

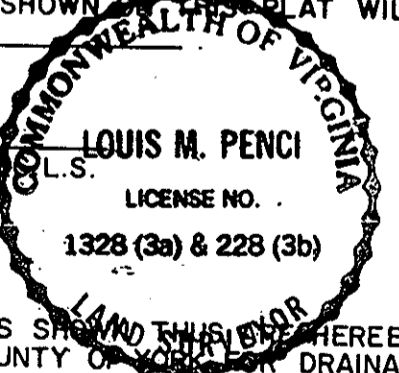
TABB LAKES, LTD., A VIRGINIA CORPORATION
AND WAS ACQUIRED FROM:
SOVRAN BANK, N.A. & DARE-PIKE LTD.

BY DEEDS DATED MAY 30, 1985 AND DULY RECORDED IN THE CLERK'S OFFICE OF THE CIRCUIT COURT OF THE COUNTY OF YORK, VIRGINIA, IN DEED BOOK 418, PAGE 200 & DEED BOOK 419, PAGE 147.

I CERTIFY THAT THE MONUMENTS AS SHOWN ON THIS PLAT WILL BE SET ON OR BEFORE DEC. 15, 1990

Louis M. Pencic

LOUIS M. PENCIC



LEGEND

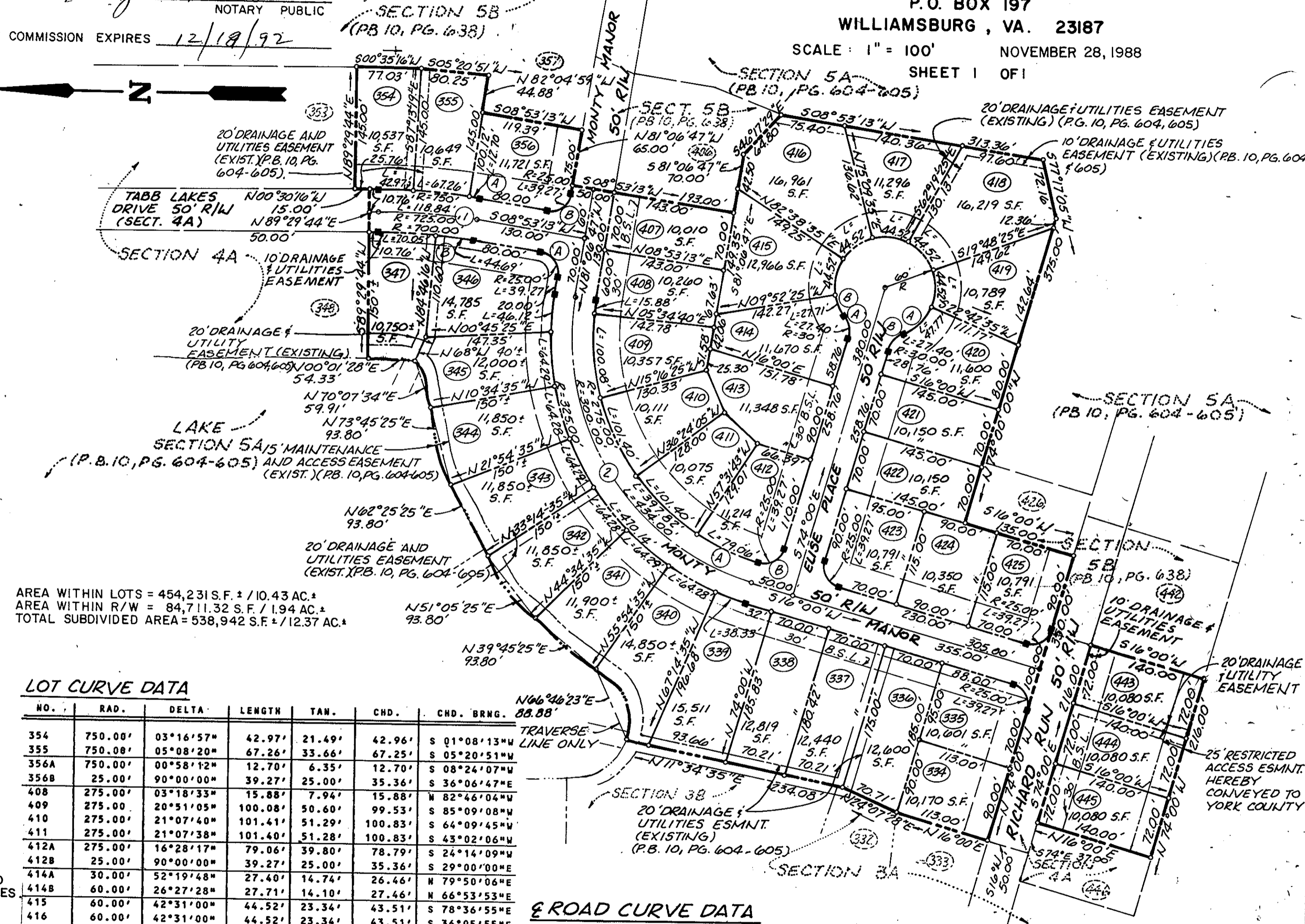
- EASEMENTS SHOWN THIS PLAT HEREBY CONVEYED TO THE COUNTY OF YORK FOR DRAINAGE & UTILITIES
- MINIMUM BUILDING SETBACK LINE SHOWN THUS.
- CONCRETE MONUMENTS SHOWN THUS.
- IRON PIPES SHOWN THUS.

WATER

EACH LOT WITHIN THIS SUBDIVISION IS SERVED BY PUBLIC WATER PROVIDED BY THE CITY OF NEWPORT NEWS.

SEWER

EACH LOT WITHIN THIS SUBDIVISION IS SERVED BY PUBLIC SEWER PROVIDED BY THE COUNTY OF YORK.



LOT CURVE DATA

NO.	RAD.	DELTA	LENGTH	TAN.	CHD.	CHD. BRNG.
354	750.00'	03°16'57"	42.97'	21.49'	42.96'	S 01°08'13"W
355	750.00'	05°08'20"	67.26'	33.66'	67.25'	S 05°20'51"W
356A	750.00'	00°58'12"	12.70'	6.35'	12.70'	S 08°24'07"W
356B	25.00'	90°00'00"	39.27'	25.00'	35.36'	S 36°06'47"E
408	275.00'	03°18'33"	15.88'	7.94'	15.88'	N 82°46'04"W
409	275.00'	20°51'05"	100.08'	50.60'	99.53'	S 85°09'08"W
410	275.00'	21°07'40"	101.41'	51.29'	100.83'	S 64°09'45"W
411	275.00'	21°07'38"	101.40'	51.28'	100.83'	S 43°02'06"W
412A	275.00'	16°28'17"	79.06'	39.80'	78.79'	S 24°14'09"W
412B	25.00'	90°00'00"	39.27'	25.00'	35.36'	S 29°00'00"W
414A	30.00'	52°19'48"	27.40'	14.74'	26.46'	N 79°50'06"E
414B	60.00'	26°27'28"	27.71'	14.10'	27.46'	N 66°53'53"E
415	60.00'	42°31'00"	44.52'	23.34'	43.51'	S 78°36'55"E
416	60.00'	42°31'00"	44.52'	23.34'	43.51'	S 36°05'55"E
417	60.00'	42°31'00"	44.52'	23.34'	43.51'	S 06°25'05"W
418	60.00'	42°31'00"	44.52'	23.34'	43.51'	S 48°56'05"W
419	60.00'	42°31'00"	44.52'	23.34'	43.51'	N 88°32'55"W
420A	60.00'	45°37'13"	47.77'	25.23'	46.52'	N 44°28'48"W
420B	30.00'	52°19'48"	27.40'	14.74'	26.46'	N 47°50'06"W
423	25.00'	90°00'00"	39.27'	25.00'	35.36'	S 61°00'00"W
425	25.00'	90°00'00"	39.27'	25.00'	35.36'	S 29°00'00"E
335	28.00'	90°00'00"	39.27'	25.00'	35.36'	N 61°00'00"E
339	325.00'	06°45'25"	38.33'	19.19'	38.31'	N 19°22'43"E
340	325.00'	11°20'00"	64.28'	32.25'	64.18'	N 39°45'25"E
341	325.00'	11°20'00"	64.28'	32.25'	64.18'	N 28°25'25"E
342	325.00'	11°20'00"	64.28'	32.25'	64.18'	N 39°45'25"E
343	325.00'	11°20'00"	64.28'	32.25'	64.18'	N 51°05'25"E
344	325.00'	11°20'00"	64.28'	32.25'	64.18'	N 62°25'25"E
345	325.00'	11°20'00"	64.28'	32.25'	64.18'	N 73°45'25"E
346A	325.00'	08°07'48"	46.82'	23.10'	46.08'	S 85°10'41"E
346B	25.00'	90°00'00"	39.27'	25.00'	35.36'	N 53°53'13"E
346C	700.00'	03°39'29"	44.69'	22.35'	44.68'	N 07°03'29"E
347	700.00'	05°44'00"	70.05'	35.05'	70.02'	N 02°21'44"E

ROAD CURVE DATA

NO.	RAD.	DELTA	LENGTH	TAN.	CHD.	CHD. BRNG.
1	725.00'	09 23'29"	118.84'	59.55'	118.79'	S 04°11'29"W
2	300.00'	82 53'13"	434.00'	264.89'	397.13'	S 57°26'37"W

APPROVED: YORK COUNTY BOARD OF SUPERVISORS

BY: J. M. Carter
PLAT APPROVING AGENT

DATE: JUNE 27, 1989

STATE OF VIRGINIA COUNTY OF YORK

IN THE CLERK'S OFFICE OF THE CIRCUIT COURT FOR THE COUNTY OF YORK THE 20th DAY OF June, 1989 THIS MAP WAS PRESENTED AND ADMITTED TO RECORD AS THE LAW DIRECTS IN PLAT BOOK 11, PAGE 87

TESTE: NANCY B. KANE, CLERK

BY: Karen D. Kelly-Walsh, DE
CLERK