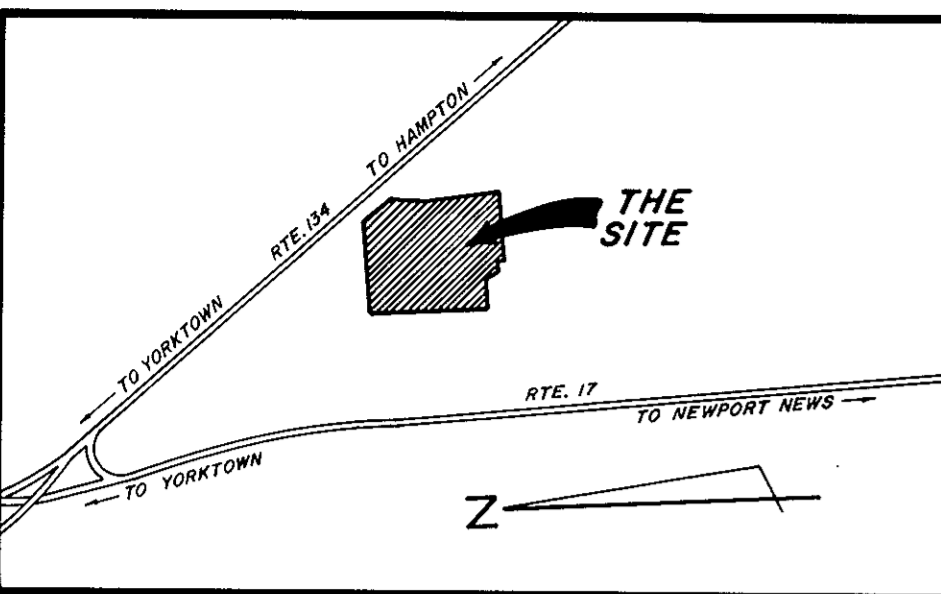


TABB LAKES

SECTION ONE

COUNTY OF YORK, VIRGINIA

C.K. TUDOR ENGINEERS, INC.
11524 JEFFERSON AVENUE
NEWPORT NEWS, VIRGINIA 23601
SCALE: 1" = 100' DEC. 10, 1984
SHEET 2 OF 2



VICINITY MAP SCALE: 1" = 2000'

THE PLATTING OF THE LAND HEREON SHOWN IS WITH THE FREE CONSENT AND IN ACCORDANCE WITH THE DESIRE OF THE UNDERSIGNED OWNERS, PROPRIETORS, AND TRUSTEES.

TABB LAKES, LTD.

Cowles M. Spencer
COWLES M. SPENCER - PRESIDENT

SOVRAN BANK, N.A., TRUSTEE

Roland A. McCoy
ROLAND A. MCCOY - SENIOR TRUST OFFICER

I, FRANCIS T. ARNOLD

A NOTARY PUBLIC IN AND FOR THE CITY OF NEWPORT NEWS, VIRGINIA, DO HEREBY CERTIFY THAT THE ABOVE NAMED PERSONS WHOSE NAMES ARE SIGNED TO THE FOREGOING WRITING HAVE ACKNOWLEDGED THE SAME BEFORE ME IN MY CITY AND STATE AFORESAID.

GIVEN UNDER MY HAND THIS 18TH DAY OF JANUARY, 1985

Francis T. Arnold
NOTARY PUBLIC

MY COMMISSION EXPIRES MAY 18, 1986

TO THE BEST OF MY KNOWLEDGE AND BELIEF, ALL THE REQUIREMENTS AS SET FORTH IN THE ORDINANCE FOR APPROVING PLATS OF SUBDIVISIONS IN THE COUNTY OF YORK, VIRGINIA HAVE BEEN COMPLIED WITH, INCLUDING A CLOSURE OF NOT LESS THAN 1/10,000'.

THIS IS TO CERTIFY THAT THE LAND EMBRACED IN THIS SUBDIVISION IS IN THE NAME OF TABB LAKES, LTD., A VIRGINIA CORPORATION AND WAS ACQUIRED FROM SOVRAN BANK, N.A.

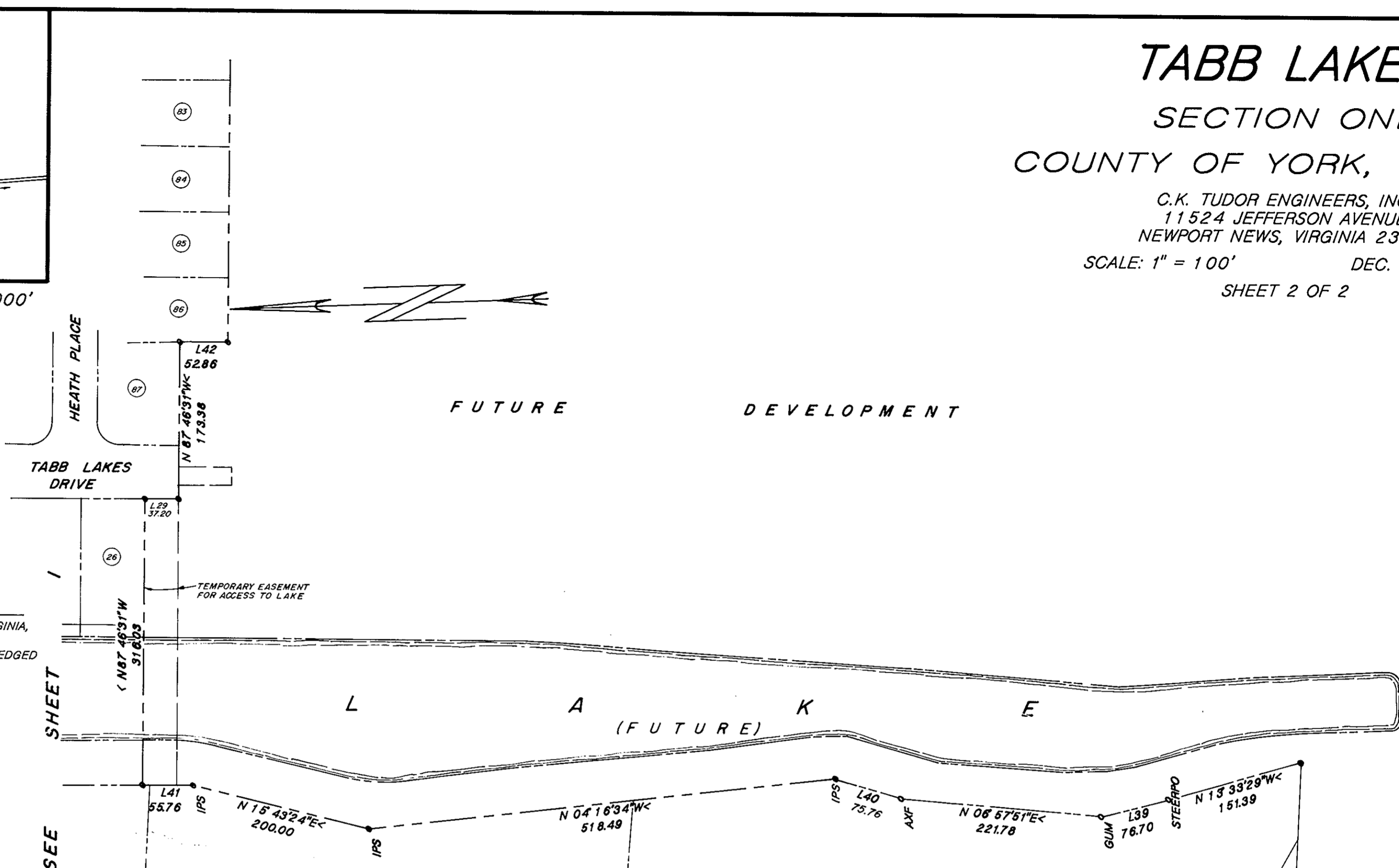
BY DEED DATED APRIL 6, 1984 AND DULY RECORDED IN THE CLERK'S OFFICE OF THE CIRCUIT COURT OF THE COUNTY OF YORK, VIRGINIA IN DEED BOOK 394, PAGE 643.

I CERTIFY THAT MONUMENTS AS SHOWN ON THIS PLAT WILL BE SET ON OR BEFORE DEC. 10, 1985

C.K. Tudor
C.K. TUDOR P.E.&C.L.S.

C.K. Tudor

WATER:
EACH LOT WITHIN THIS SUBDIVISION IS SERVED BY PUBLIC WATER PROVIDED BY THE CITY OF NEWPORT NEWS.
SEWER:
EACH LOT WITHIN THIS SUBDIVISION IS SERVED BY PUBLIC SEWER PROVIDED BY THE COUNTY OF YORK.



LINE DATA TABLE

LINE	BEARING	DISTANCE
1	S 84° 58' 55" E	102.89
2	N 81° 31' 04" E	98.66
3	N 89° 47' 20" E	15.29
4	S 86° 16' 56" W	137.94
5	N 46° 13' 06" W	57.63
6	S 46° 13' 06" E	57.63
7	N 03° 44' 04" W	553
8	N 87° 46' 31" W	106.76
9	N 02° 13' 29" E	126.26
10	S 02° 13' 29" W	126.26
11	N 86° 15' 56" E	102.94
12	N 28° 12' 50" E	76.14
13	S 87° 46' 31" E	46.74
14	NOT USED	
15	S 28° 53' 14" E	83.23
16	N 65° 54' 46" E	80.42
17	S 86° 16' 56" W	68.20
18	N 80° 07' 24" W	64.29
19	S 60° 19' 30" W	64.29
20	S 47° 42' 30" W	64.29
21	S 35° 05' 46" W	64.29
22	S 22° 28' 54" W	64.29
23	S 09° 52' 03" W	64.29
24	N 02° 13' 29" E	88.70
25	S 85° 06' 41" W	27.20
26	N 02° 13' 29" E	52.86
27	N 02° 13' 29" E	66.00
28	NOT USED	
29	N 02° 13' 29" E	37.20
30	S 87° 46' 31" E	51.4
31	N 87° 46' 31" W	27.62
32	N 02° 13' 29" E	33.00
33	N 86° 15' 56" E	15.60
34	NOT USED	
35	S 03° 09' 18" E	5.00
36	N 03° 09' 18" W	31.67
37	S 03° 09' 18" E	7.42
38	S 70° 36' 42" W	28.51
39	N 12° 31' 17" W	76.70
40	N 18° 46' 20" E	75.76
41	N 02° 13' 29" E	66.78
42	N 02° 13' 29" E	62.86

CURVE DATA TABLE

DELTA	RADIUS	ARC	TANGENT	CHORD	CHORD BRG
1	90° 00' 00"	25.00	39.27	25.00	36.36 S 111° 17' 0" W
2	2° 58' 40"	300.00	166.96	60.32	165.18 S 71° 10' 58" W
3	3° 26' 30"	450.00	278.36	148.79	273.94 S 68° 32' 41" W
4	4° 53' 28"	25.00	36.63	22.49	33.44 N 87° 11' 50" W
5	6° 53' 06"	25.00	23.65	12.73	22.69 N 18° 14' 03" W
6	26° 56' 04"	60.00	30.151	43.64	70.59 S 44° 46' 54" W
7	6° 53' 06"	25.00	23.65	12.73	22.69 S 72° 12' 09" E
8	4° 53' 28"	25.00	36.63	22.49	33.44 S 03° 14' 22" E
9	3° 30' 52"	450.00	286.78	148.45	281.96 S 20° 28' 55" W
10	90° 00' 00"	25.00	39.27	25.00	36.36 N 47° 13' 29" E
11	95° 22' 47"	150.00	249.70	164.79	221.86 N 44° 32' 06" E
12	20° 17' 18"	350.00	123.93	62.62	123.29 N 13° 17' 57" W
13	1° 42' 32"	300.00	103.19	52.11	102.69 N 13° 36' 20" W
14	80° 16' 48"	25.00	36.03	21.08	32.23 N 36° 24' 20" E
15	20° 15' 28"	360.00	127.28	64.31	126.62 N 66° 25' 00" E
16	90° 00' 00"	25.00	39.27	25.00	36.36 S 78° 42' 44" E
17	1° 42' 32"	350.00	120.39	60.80	119.80 S 13° 36' 20" E
18	20° 17' 18"	300.00	106.23	53.68	106.67 S 13° 17' 57" E
19	95° 22' 47"	100.00	166.47	109.86	147.90 S 44° 32' 06" W
20	90° 00' 00"	25.00	39.27	25.00	36.36 N 42° 46' 31" W
21	6° 53' 06"	25.00	23.65	12.73	22.69 N 29° 12' 32" E
22	26° 56' 04"	60.00	30.153	43.64	70.59 N 87° 46' 31" W
23	6° 53' 06"	25.00	23.65	12.73	22.69 S 24° 46' 34" E
24	90° 00' 00"	25.00	39.27	25.00	36.36 S 47° 13' 29" W
25	90° 00' 00"	25.00	39.27	25.00	36.36 N 42° 46' 31" W
26	84° 02' 27"	390.00	572.05	351.41	522.13 N 44° 14' 43" E
27	90° 00' 00"	25.00	39.27	25.00	36.36 S 48° 44' 04" E
28	90° 00' 00"	25.00	39.27	25.00	36.36 N 47° 13' 29" E
29	6° 53' 06"	25.00	23.65	12.73	22.69 S 60° 47' 28" E
30	26° 56' 04"	60.00	30.153	43.64	70.59 N 02° 13' 29" E
31	6° 53' 06"	25.00	23.65	12.73	22.69 S 86° 14' 26" W
32	90° 00' 00"	25.00	39.27	25.00	36.36 N 42° 46' 31" W
33	4° 24' 43"	450.00	34.66	17.33	34.64 N 04° 26' 51" E
34	37° 24' 09"	60.00	38.17	20.31	38.48 N 80° 29' 50" W
35	NOT USED				
36	2° 09' 52"	450.00	16.99	8.50	17.00 N 86° 11' 00" E
37	13° 44' 38"	300.00	71.96	36.16	71.79 N 79° 23' 37" E
38	16° 14' 02"	300.00	86.00	42.79	84.72 N 64° 24' 17" E
39	0° 29' 57"	390.00	3.39	1.70	3.40 S 02° 28' 28" W
40	7° 24' 03"	350.00	46.21	22.64	46.18 N 19° 44' 34" W
41	8° 21' 32"	150.00	24.50	12.28	24.47 S 87° 32' 43" W

STATE OF VIRGINIA
COUNTY OF YORK
IN THE CLERK'S OFFICE OF THE CIRCUIT COURT FOR THE COUNTY OF YORK THE 6th DAY OF March, 1985
THIS MAP WAS PRESENTED AND ADMITTED TO RECORD AS THE LAW DIRECTS IN PLAT BOOK 10 PAGE 92.
EDITH M. ELLIOTT, CLERK
TESTE: _____
BY: *Catherine Bender, D.C.*